



Short Communication

Transformation of Soft Rot Resistant *aiiA* Gene into Chinese Cabbage (*Brassica rapa* ssp. *pekinensis*) by the Pollen-tube Pathway

Li-Wei Han^{1†}, Yu Ge^{2†}, Lei Yao³, Chong-Shi Cui¹ and Shu-Ping Qu^{1*}

¹Key Laboratory of Biology and Genetic Improvement of Horticultural Crops (Northeast Region), Department of Horticulture, Northeast Agricultural University, Harbin, 150030, People's Republic of China

²Haikou Experimental Station/ Institute of Banana, Chinese Academy of Tropical Agricultural Sciences, Haikou, 570102, People's Republic of China

³Beijing Agricultural Biotechnology Research Center, Beijing Academy of Agriculture and Forestry Science, Beijing 100097, People's Republic of China

[†]Li Wei Han and Yu Ge contributed equally to this work

*For correspondence: qushuping@sohu.com

Abstract

Bacterial soft rot of Chinese cabbage is the most destructive disease caused by *Erwinia carotovora*. Until now reliable sources of resistance and effective control methods are unavailable, so development of highly resistant breeding lines is desirable. In the present study, we established an *aiiA* gene transformation system of soft rot resistant. The *aiiA* gene was introduced into Chinese cabbage through the pollen-tube pathway using the plasmid vector pBBBast-*aiiA* (7, 315 kb), which included *aiiA* gene, expression regulatory sequence (CaMV 35S promoter, OCS terminator), the herbicide resistant *Bar* gene and other elements. Five out of 20632 (0.02%) of T₀ plants was positive for *aiiA* gene through PCR. Further PCR Southern blot analysis displayed that the gene *aiiA* segments were transformed into T₀ plants. These transgenic plants could be the potential cultigens against the pathogens of soft rot for Chinese cabbage. © 2015 Friends Science Publishers

Keywords: Chinese cabbage; Soft rot; *aiiA*; Coat protein-mediated resistance; Pollen-tube pathway

Introduction

Chinese cabbage is one of the main leafy vegetables that is widely grown in Asia and exhibits the most genetic diversity with distinct morphological characteristics and the largest planting area and yield (Cao *et al.*, 2006; Ge *et al.*, 2011a, 2012). However, outbreaks of soft rot can cause substantial losses in the yield and marketability of Chinese cabbage (Kikumoto, 2000; Park *et al.*, 2012).

Bacterial soft rot caused by *Erwinia carotovora* is one of the most destructive diseases including carrots, potato, Chinese radish and Brassicas, especially Chinese cabbage in East Asian (Kikumoto, 2000; Vanjildorj *et al.*, 2009). This soil borne, facultative anaerobic pathogen far and wide distributed in farmland as well as in uncultivated land usually produces abundant of pectic enzymes, which cause plant tissue maceration, eventually resulting in plant death (Collmer and Keen, 1986). Chemical medicines during the vegetation period have been apparent to protect the plants from fungal infection but recurrent chemical medicines applications are usually inappropriate because pathogens could quickly develop resistance and also because medicines could contribute to environmental pollution (Kikumoto, 2000).

The use of transgenic technology is considered as one of the most promising alternative for more rational and safe crop-management practices. The first disease-control application of *AiiA* protein was the introduction of the *aiiA* gene into transgenic potato and tobacco plants (Dong *et al.*, 2001). From then, the *aiiA* has been successfully transformed into other species (Ban *et al.*, 2009), which exhibited enhanced resistance to soft rot disease. The technique of the pollen-tube pathway transformation was first reported by Zhou *et al.* (1983). This approach has been successfully applied in wheat (Chong *et al.*, 1998), maize (Wu *et al.*, 2008; Yang *et al.*, 2009), melon (Hao *et al.*, 2011), soybean (Yang *et al.*, 2011) and cotton (Huang *et al.*, 1999). In the present, *aiiA* gene was inserted into Chinese cabbage through the pollen-tube pathway technology. The transformed plants were confirmed by PCR and PCR-Southern blotting analysis.

Materials and Methods

Transformation experiments were conducted with Chinese cabbage cultivar genotype Er Niu Xin. The plasmid vector was pBBBast-*aiiA* (7, 315 kb), which was kindly supplied by Beijing Agricultural Biotechnology Research Center. The

plasmid vector contained the soft rot resistant *aiiA* gene fused between the CaMV 35S promoter and the OCS terminator, the herbicide resistant *Bar* gene and other elements (Fig. 1). Plasmid extraction was carried out according to the alkaline lysis method (Sambrook *et al.*, 1989). Purified plasmid DNA of pBBBast-*aiiA* was used for transformation with the pollen-tube method. Basta herbicide is a sterilant herbicide and the actual site of its target is glutamine synthetase. The herbicide resistant *Bar* gene with functions of detoxification could remove Basta herbicide's damage.

After 24 h of artificial pollination, 2/5 of the stigmas were removed by knife, and 5 μ L DNA solutions (1000 μ g/mL) were dropped evenly onto the exposed surfaces of the stigmas by a pipette. Treated flowers were marked and untreated flowers and buds in the same node were simultaneously eliminated. Seed pods that derived from the treated flowers were harvested respectively. Seeds from wild-type plants were harvested to serve as untransformed controls.

T₀ seeds were screened to gain transgenic plants through spraying of Basta herbicide (0.15% and 0.2%) on the seedlings at the cotyledon period and the first euphylla period (transverse length of the first euphylla \geq 5 cm), respectively and then, after the second euphylla period, total gDNA of Basta herbicide resistant plants were extracted from the fresh leaves of plants through the modified SDS method (Ge *et al.*, 2011b). PCR amplifications for detection of the presence of CP sequences in the transgenic plants were achieved with the primer: the forward primer 5'-ctcgagatgacagtaaaaaag-3' (underlined *Xho*I site added) and reverse primer 5'-tctagactatatatactctgggaac -3' (underlined *Xba*I site added), which corresponded to *aiiA* core conserved sequence. PCR amplifications, PCR product separation and observation were implemented according to the PCR conditions (Ge *et al.*, 2011b). The expected amplification fragments were 753 bp in length.

Purified PCR amplification product of *aiiA* gene served as a probe to be used in the Southern blot analyses. The hybridization method was implemented according to the manufacturer's instructions of the DIG High Prime Labeling and Detection Starter Kit I (Roche).

Results

An exogenous *aiiA* gene was transformed into Chinese cabbage through the pollen-tube pathway method and finally integrated into genome sequence in progeny. As shown in the present study, 8 out of 20, 632 T₀ seedlings were identified as Basta herbicide resistant plants, and then, PCR identification was used in 8 T₀ seedlings for transgenic screening. 5 out of 8 T₀ plants contained *aiiA* gene detected by PCR amplifications of the 753 bp (Fig. 2). PCR-positive candidate plants were further identified through PCR-Southern (Fig. 3) and resulted in a transformation frequency of 0.02% (5/20, 632) of the germinated T₀ plants.

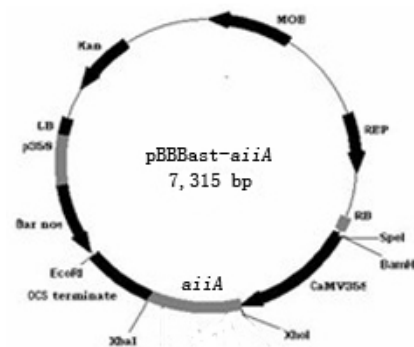


Fig. 1: Schematic maps of plasmid vector pBBBast-*aiiA*

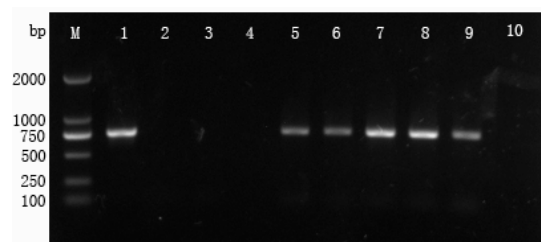


Fig. 2: PCR analysis of T₀ transgenic Chinese cabbage plants. Primer 1 was used for identification of the *aiiA* gene. PCR products were 753 bp in length. Lane M: DL2000 Marker; Lane 1: *aiiA*; Lane 5, 6, 7, 8, 9: PCR-positive result; Lane 2, 3, 4: PCR-negative result; Lane 10: untransformed controls

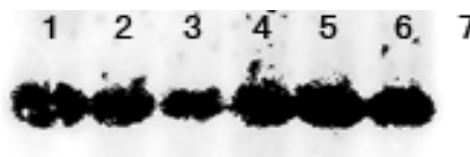


Fig. 3: PCR-southern blot analysis of T₀ transgenic Chinese cabbage plants. Lane 1: *aiiA*; Lane 2-6: transformed plant; Lane 7: untransformed controls

Discussion

The gene transformation efficiency of 0.02% by PCR analyses in this study was lower than this previously reported in the same Chinese cabbage line using the same pathway by our researchers, which was estimated as 0.15% for *TuMV-CP* gene (Han, 2011). Because the sequence length of *aiiA* gene (753bp) was longer than the sequences length of *TuMV-CP* gene (132bp), we suggested that the difference of the transformation efficiency of these genes could be in accordance with the targets genes sequences length. Longer fragment exogenous DNA was more difficult in transformation in Chinese cabbage via the pollen-tube pathway. Our result displayed that only 5 transgenic plants were obtained from 20, 632 T₀ seeds. Zhang *et al.* (2005) suggested that the prior stages of the pollen-tube method are

convenient, but amount of progeny were required to screen in order to obtain abundant available transformed plants. In the subsequent study, a large number of T₀ seeds should be needed to gain more transgenic plants to verify the effect of transgenic plants.

Acknowledgements

This work was supported by the Hi-Tech Development and Research (863) Program of China (2008AA10Z154).

References

- Ban, H., X. Chai, Y. Lin, Y. Zhou, D. Peng, Y. Zhou, Y. Zou, Z. Yu and M. Sun, 2009. Transgenic *Amorphophallus konjac* expressing synthesized acyl-homoserine lactonase (*aiiA*) gene exhibit enhanced resistance to soft rot disease. *Plant Cell Rep.*, 28: 1847–1855
- Cao, J.S., X.L. Yu, W.Z. Ye, G. Lu and X. Xiang, 2006. Functional analysis of a novel male fertility *CYP86MF* gene in Chinese cabbage (*Brassica campestris* L. ssp. *chinensis* makino). *Plant Cell Rep.*, 24: 715–723
- Chong, K., S.L. Bao, T. Xu, K.H. Tan, T.B. Liang, Z.J. Zeng, H.L. Huang, J. Xu and Z.H. Xu, 1998. Functional analysis of the *ver* gene using antisense transgenic wheat. *Physiol. Plant.*, 102: 87–92
- Collmer, A. and N.T. Keen, 1986. The role of pectic enzymes in plant pathogenesis. *Annu. Rev. Phytopathol.*, 24: 383–409
- Dong, Y.H., L.H. Wang, J.L. Xu, H.B. Zhang, X.F. Zhang and L.H. Zhang, 2001. Quenching quorum-sensing-dependent bacterial infection by an N-acyl homoserine lactonase. *Nature*, 411: 813–817
- Ge, Y., N. Ramchiary, T. Wang, C. Liang, N. Wang, Z. Wang, S.R. Choi, Y.P. Lim and Z.Y. Piao, 2011a. Mapping quantitative trait loci for leaf and heading-related traits in Chinese cabbage (*Brassica rapa* L. ssp. *pekinensis*). *Hort. Environ. Biotechnol.*, 52: 494–501
- Ge, Y., N. Ramchiary, T. Wang, C. Liang, N. Wang, Z. Wang, S.R. Choi, Y.P. Lim and Z.Y. Piao, 2011b. Development and linkage mapping of unigene-derived microsatellite markers in *Brassica rapa* L. *Breed. Sci.*, 61: 160–167
- Ge, Y., T. Wang, N. Wang, Z. Wang, C. Liang, N. Ramchiary, S.R. Choi, Y.P. Lim and Z.Y. Piao, 2012. Genetic mapping and localization of quantitative trait loci for chlorophyll content in Chinese cabbage (*Brassica rapa* ssp. *pekinensis*). *Sci. Hortic.*, 147: 42–48
- Hao, J.F., Y.D. Niu, B.J. Yang, F. Gao, L.Q. Zhang, J. Wang and A. Hasi, 2011. Transformation of a marker-free and vector-free antisense ACC oxidase gene cassette into melon via the pollen-tube pathway. *Biotechnol. Lett.*, 33: 55–61
- Han, L.W., 2011. *Transferring aiiA, TuMV-CP Gene into Chinese Cabbage by Pollen-tube Pathway*. Northeast Agricultural University, Harbin, China, Thesis (in Chinese)
- Huang, G., Y. Dong and J. Sun, 1999. Introduction of exogenous DNA into cotton via pollen-tube pathway with GFP as a reporter. *Chin. Sci. Bull.*, 44: 698–701
- Kikumoto, T., 2000. Ecology and biocontrol of soft rot of Chinese cabbage. *J. Gen. Plant Pathol.*, 66: 275–277
- Park, Y.H., C.H. Choi, E.M. Park, H.S. Kim, H.J. Park, S.C. Bae, I. Ahn, M.G. Kim, S.R. Park and D.J. Hwang, 2012. Over-expression of rice leucine-rich repeat protein results in activation of defense response, thereby enhancing resistance to bacterial soft rot in Chinese cabbage. *Plant Cell Rep.*, 31: 1845–1850
- Sambrook, J., E.F. Fritsch and T. Maniatis, 1989. *Molecular cloning: A Laboratory Manual*. Cold Spring Harbor laboratory, Cold Spring Harbor, New York, USA
- Vanjildorj, E., S.Y. Song, Z.H. Yang, J.E. Choi, Y.S. Noh, S. Park, W.J. Lim, K.M. Cho, H.D. Yun and Y.P. Lim, 2009. Enhancement of tolerance to soft rot disease in the transgenic Chinese cabbage (*Brassica rapa* L. ssp. *pekinensis*) inbred line, Kenshin. *Plant Cell Rep.*, 28: 1581–1591
- Wu, W., Q. Su, X.Y. Xia, Y. Wang, Y.S. Luan and L.J. An, 2008. The *Suaeda liaotungensis* kitag betaine aldehyde dehydrogenase gene improves salt tolerance of transgenic maize mediated with minimum linear length of DNA fragment. *Euphytica*, 159: 17–25
- Yang, A.F., Q. Su, L.J. An, J.F. Liu, W. Wu and Z. Qiu, 2009. Detection of vector-and selectable marker-free transgenic maize with a linear GFP cassette transformation via the pollen-tube pathway. *J. Biotechnol.*, 139: 1–5
- Yang, S.H., G.L. Li, M.G. Li and J.H. Wang, 2011. Transgenic soybean with low phytate content constructed by *Agrobacterium* transformation and pollen-tube pathway. *Euphytica*, 177: 375–382
- Zhang, Y.S., X.Y. Yin, A.F. Yang, G.S. Li and J.R. Zhang, 2005. Stability of inheritance of transgenes in maize (*Zea mays* L.) lines produced using different transformation methods. *Euphytica*, 144: 11–22
- Zhou, G.Y., J. Weng, Y.S. Zeng, J.G. Huang, S.Y. Qian and G.L. Liu, 1983. Introduction of exogenous DNA into cotton embryos. *Meth. Enzymol.*, 101: 433–481

(Received 01 April 2014; Accepted 26 June 2014)