

Comparison of Three Methods for the Identification of *Mycobacterium tuberculosis*

SADEGHIAN, A., TAVAKKOL AFSHARI J.^{1†}, GHANAAT J., SADEGHAIN H., NAMAI MH AND KHODADOOST MA.[†]
Microbiology laboratory, Ghaem Medical Center and [†]Immunology Research Group, Bu-Ali Research Institute, Mashhad University of Medical Sciences (MUMS), Mashhad-Iran

¹Corresponding author's e-mail: Jtavakkol@yahoo.com

ABSTRACT

The present study was conducted to compare three methods, culture and morphology of colonies, biochemical tests and polymerase chain reaction for the identification of *Mycobacterium tuberculosis* by using well characterized clinical specimens from patients who were assessed according to standard parameters for *Mycobacterium tuberculosis*. Seventy seven isolated *Mycobacterium* species from patient's samples suspected to have tuberculosis from March 2003 till February 2004 collected for detection of *Mycobacterium tuberculosis* (MTB) or *Mycobacterium* other than tuberculosis (MOTT). After positive smear and cultures for *Mycobacterium tuberculosis* by standard methods, biochemical tests including catalase test, nitrate reduction, thiophene-2 carboxylic acid hydrazide (TCH) test and 68°C catalase test were performed. For Polymerase Chain Reaction (PCR) we used the commercial Cinagene® PCR detection kit for *Mycobacterium tuberculosis*. The results for biochemical tests indicated that, 49(63.6%) of isolated colonies, detected as MTB and 28(36.4%) detected as MOTT. Results from the PCR method indicated that 51(66.2%) of isolated colonies, identified as MTB and 26(33.8%) detected as MOTT. Morphological characteristic of isolated colonies identified 54(70.1%) as having rough appearance, a characteristic for MTB and 23(29.9%) as having smooth appearance, a characteristic for MOTT. Our results indicated that the sensitivity and specificity of biochemical tests compared to PCR method were 96 and 100%, respectively. Sensitivity and specificity of morphological characteristic for isolated colonies in comparison with PCR method were 98% and 84% respectively. In this study, there were no statistically significant differences between biochemical tests, morphology of colonies and PCR method.

Key Words: *Mycobacterium*; Tuberculosis; PCR; Identification; Culture

INTRODUCTION

The diseases produced by species of the genus *Mycobacterium* are important causes of morbidity and mortality in the world, particularly in third world countries; they have increased due to HIV infections, with the involvement mainly of *M. tuberculosis* and *M. avium* complexes. A recent report suggests that there are 20 million cases of active tuberculosis in the world and that around 5000 people die from tuberculosis every day (Barnes *et al.*, 1991). The annual incidence of the disease is expected to be increased by 41% between 1998 to 2020 and achievement of WHO targets by 2010 would prevent 23% cases by 2020 (Dye *et al.*, 1999). The identification of *Mycobacterium* to the species level is important because of the clinical significance; some species are pathogenic while others are not (Kamerbeek *et al.*, 1997). Knowledge of species is also critical in order to provide adequate patient management because; specific antimycobacterial drugs are required against different pathogenic *Mycobacterium* species (Gamboa *et al.*, 1998). The conventional methods for the identification of *Mycobacterium* currently are based on culture and biochemical tests. However because the organism is slowly growing, laboratory diagnosis by these methods can take as long as eight to ten weeks (Springer *et*

al., 1996). Alternative techniques have been established, such as thin layer chromatography, gas-liquid chromatography, high-performance liquid chromatography (HPLC), and molecular techniques based on amplification, or sequencing of nucleic acids (Eisenach *et al.*, 1991; Cormican *et al.*, 1992; Kirschner *et al.*, 1993; Fodor, 1995).

This study was designed to compare three methods; culture and morphology of colonies, biochemical tests and polymerase chain reaction for the identification of *M. tuberculosis* by using well characterized clinical specimens from patients who were assessed according to standard parameters for *M. tuberculosis*.

MATERIALS AND METHODS

In a prospective study from March 2003 till February 2004 a total of seventy seven isolated *Mycobacterium* species from various specimens of patients who were suspected of having tuberculosis at Ghaem medical center in Mashhad-Iran were collected for detection of *Mycobacterium tuberculosis* (MTB) or *Mycobacterium* other than tuberculosis (MOTT) by classical culture, biochemical tests and PCR method. The type of specimens included sputum, bronchial washing and pleural fluid. Specimens were processed by standard mycobacterium laboratory method.

In this study, Petroff's method was used to process and decontaminate clinical specimens (Bartelt, 2000). Briefly, specimens were mixed by the same volume of 2% NaOH and 1% NaCl. After 15 minutes incubation, phosphate buffer was added and centrifuged at 3000 g for 15 minutes. Then the supernatant was withdrawn and the sediment was neutralized by mixture of 1M HCl and phenol red (as indicator) and was used for staining and culture.

For staining, 200 µl of samples were placed on the surface of slides and after drying, they were fixed in 80°C for 30 minutes. Ziehl-Neelsen (Smithwick, 1976) method was used for acid fast staining.

Culture of *Mycobacterium* was performed by inoculation of the processed material onto Lowenstein-Jensen (Baron *et al.*, 1990) and incubated at 37°C for six weeks.

Positive cultures were further tested by biochemical tests and PCR method. Also growth rate and pigment production were determined for each isolate. Biochemical tests performed for each isolate were nitrate reduction, semi-quantitative catalase test, catalase production at 68°C, and thiophene-2 carboxylic acid hydrazide (TCH) test (Baron *et al.*, 1990).

For PCR we used the commercial Cinagene® PCR detection kit for *Mycobacterium tuberculosis* (Tehran, Iran). Basically, bacterial cells were lysed with TB lyses solution included with the kit; DNA was then extracted by boiling method (Holmes *et al.*, 1981). Reaction conditions included a pre-incubation time of 2 min at 93 °C, followed by 40 two-step cycles of 20 seconds at 93°C, and 30 seconds at 72°C. PCR products were electrophoresed on 2% agarose gels.

Result data were entered into a database, to calculate the sensitivity for each method and concordance percentages between methods.

RESULTS

Data from biochemical tests are shown in Table I. These results indicated that, 49(63.6%) of isolated colonies, identified as MTB and 28(36.4%) detected as MOTT. Results by PCR method showed that 51(66.2%) of isolated colonies were identified as MTB and 26(33.8%) as MOTT (Fig.1-2). The morphological characteristic of isolated colonies identified 54(70.1%) as having rough appearance, a characteristic for MTB and 23(29.9%) as having smooth appearance, a characteristic for MOTT. Our results indicated that the sensitivity and specificity of biochemical tests compared to PCR method were 96 and 100%, respectively. Positive predicted value (PPV) and negative predicted value (NPV) were 100 and 92%, respectively (Table II, Fig. 3). Sensitivity and specificity of morphological characteristic for isolated colonies in comparison with PCR were 98 and 84% and its PPV and NPV were 92 and 95%, respectively (Table II, Fig. 4). Overall results indicated that there were no statistically

Fig. 1. PCR amplification for *M. tuberculosis*. Lane1: *M. tuberculosis* positive control; Lanes 2-5 and 7: *M. tuberculosis* positive specimens; Lanes 8-10: *M. tuberculosis* negative specimens, lane 6: 50 bp ladder.

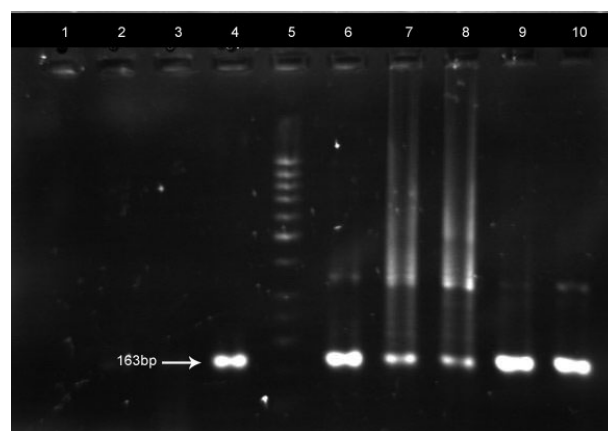
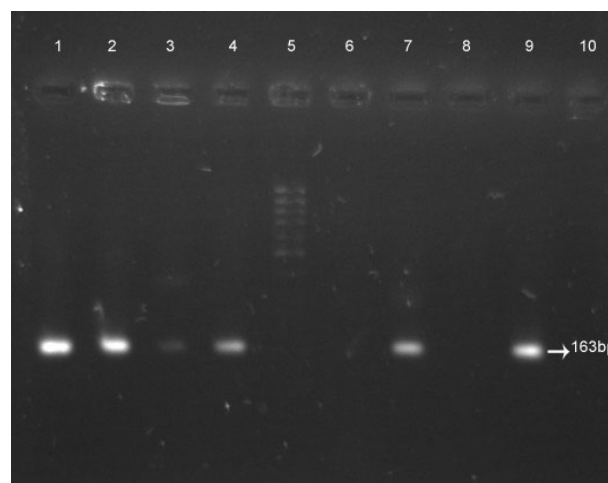


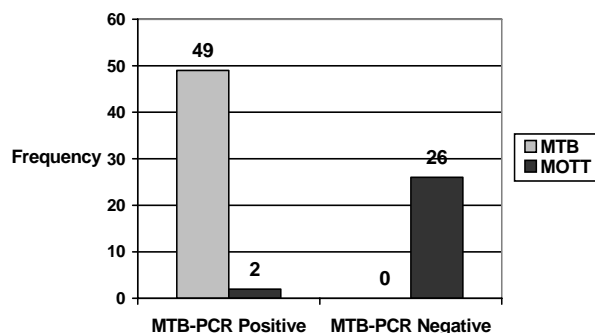
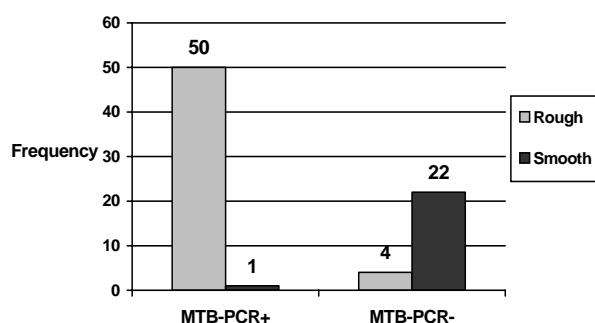
Fig. 2. PCR amplification for *M. tuberculosis*. Lane1: *M. tuberculosis* positive control; Lanes 2, 4, 7, and 9: *M. tuberculosis* positive specimens; Lanes 3, 6, and 8: *M. tuberculosis* negative specimens; Lane 5: 50 bp ladder.



significant differences between biochemical tests, morphology of colonies and PCR method.

DISCUSSION

The ability to rapidly detect *M. tuberculosis* in clinical specimens has important implications in the treatment of TB (Wang & Tay, 1991). In Iran, laboratory diagnosis of TB is mostly based on smear-microscopy, classical culture and biochemical identification methods. Classical culture and biochemical tests, when properly applied, detect *M. tuberculosis* in clinical samples, with reasonable sensitivity (Morgan *et al.*, 1983; Mondragon *et al.*, 2000; Iqbal *et al.*, 2003). However, primarily due to the slow growth of the

Fig. 3. Comparison of PCR results with biochemical tests for detection of Mycobacterium species.**Fig. 4. Comparison of PCR results with morphology of colonies for detection of Mycobacterium species.**

bacteria, these methods usually require 4 to 8 weeks for completion. This results in numerous missed or delayed diagnoses, adversely affecting patient care and tuberculosis control and allows for the spread of infection (Bennedsen *et al.*, 1996). Today, many molecular techniques are available for the diagnosis of tuberculosis. These techniques are fast, reliable and sensitive (Ellner *et al.*, 1988; Cousins *et al.*, 1992; Devallois *et al.*, 1997). However some studies indicated a relatively low PCR sensitivity. Pierre (1991) and Soini (1992) found sensitivity for their PCR assays of 63 and 55.9%, respectively. Such low sensitivity in PCR may be explained by suboptimal assay conditions. As demonstrated by Cegielski (1997), the sensitivity of PCR with pericardial fluid for detection of MTB was poor in compare to conventional culture method. In their study tuberculosis was correctly diagnosed by culture in 15 (93%) patients, by PCR in 13 (81%) patients, and by histology in 13 of 15 (87%) patients. Also, PCR gave one false-positive result for a patient. Therefore, the sensitivity and false-positive results with PCR remain a concern.

On the other hand, other studies showed that PCR assays not only can prove more sensitivity than conventional culture method, but can modify the present understanding of MTB infection (Del Portillo *et al.*, 1991;

Grosset & Mouton, 1995). In few countries, nucleic acid amplification techniques are used mainly for cases where there is a chance that the infection may be due to a mycobacterium other than *M. tuberculosis* (Hance *et al.*, 1988). It is also to be noted that PCR techniques involve prohibitive expenditure in terms of instrumentation, expertise and reagents, putting them out of reach of many laboratories in developing countries including Iran.

In our study, seventy seven isolated colonies from positive Mycobacterium cultures were differentiated into MTB and MOTB based on three different methods. Results obtained in this work showed that the basic methodology for Mycobacterium identification, including colonial morphology, pigmentation, growth rate, and enzymatic tests were fast and reliable for the identification of MTB isolates. The overall accuracy of PCR approached the results of conventional methods. These results indicate that, for diagnosis of MTB from positive colonies, conventional biochemical tests are sensitive as the PCR technique. Studies carried out in developed countries have demonstrated similar sensitivities for the new methods and conventional culture (Sjobering *et al.*, 1990; Noordhock *et al.*, 1994). Several studies evaluated commercial amplification kits designed to directly detect MTB DNA and RNA in clinical specimens (Morgan *et al.*, 1983; Piersimoni *et al.*,

Table I. Results of biochemical tests for detection of MTB

Test	Result	Frequency	Percent	Cumulative Percent
Catalase test	>45 mm	18	23.4	23.4
	<45 mm	59	76.6	100.0
	Total	77	100.0	
Nitrate reduction test	Negative	16	20.8	20.8
	+	18	23.3	44.1
	++	13	16.9	61.0
	+++	30	39	100.0
	Total	77	100.0	
TCH test	Resistance (Negative)	76	98.7	98.7
	Sensitive (Positive)	1	1.3	100.0
	Total	77	100.0	
Catalase 68°C test	Negative	54	70.1	70.1
	Positive	23	29.9	100.0
	Total	77	100.0	

Table II. Comparison of biochemical tests and Morphology results with PCR for detection of MTB

		Total	Biochemical Tests' Results		Morphology of Colonies	
			MTB	MOTT	Smooth	Rough
Results for detection of MTB	Positive	Frequency 51	49	2	1	50
		Percent 66.2%	96.1%	3.9%	2.0%	98.0%
	Negative	Frequency 26	0	26	22	4
		Percent 33.8%	0.0%	100.0%	84.6%	15.4%
Total		Frequency 77	49	28	23	54
		Percent 100.0%	63.6%	36.4%	29.9%	70.1%

1997; Scarparo *et al.*, 2000). The amplification techniques had a strong impact on the speed of the TB diagnosis. However, these studies indicate that, PCR cannot replace *Mycobacterium* culture.

CONCLUSIONS

If we consider PCR as the most sensitive and specific method for the detection of MTB, then, our results indicated that, biochemical tests have a good correlation with PCR for this purpose, although, as far as cost-benefit analysis, biochemical tests are less expensive than PCR. Even the morphology of colonies in culture, has close sensitivity and specificity to PCR. Due to the expensive equipments and reagents to perform PCR method, we suggest that, for suspected specimens for MTB, standard culture and biochemical tests are sufficient, if time is not critical.

REFERENCES

- Barnes, P.F., A.B. Bloch, P.T. Davidson and D.E. Sinder, 1991. Tuberculosis in patients with human immunodeficiency virus infection. *New England J. Med.*, 324: 1644–50
- Baron, E.J. and S.M. Finegold, 1990a. *Bailey and Scott's Diagnostic Microbiology*, 8th Ed. pp. 627, 630. C.V. Mosby Company, St. Louis, MO. USA
- Bartelt, M.A., 2000. *Diagnostic Bacteriology "A Study Guide"*, p. 22–3. Davis Company, Philadelphia, F.A. USA
- Benndsen, J., V.O. Thomsem, G.E. Pfyffer, G. Funke, K. Feldmann, A. Beneke and P.A. Jenkins, 1996. Utility of PCR in diagnosing pulmonary tuberculosis. *J. Clin. Microbiol.*, 34: 1407–9
- Cegielski, J.P., B.H. Devlin, A.J. Morris, J.N. Kitinya, U.P. Pulipaka, L.E. Lema, J.L. Lwakatare and L.B. Reller, 1997. Comparison of PCR, culture, and histopathology for diagnosis of tuberculous pericarditis. *J. Clin. Microbiol.*, 35: 3254–7
- Cormican, M.G., T. Barry, F. Gannon and J. Flynn, 1992. Use of polymerase chain reaction for early identification of *Mycobacterium tuberculosis* in positive cultures. *J. Clin. Pathol.*, 45: 601–4
- Cousins, D.V., S.D. Wilton, B.R. Francis and B.L. Gow, 1992. Use of polymerase chain reaction for rapid diagnosis of tuberculosis. *J. Clin. Microbiol.*, 30: 255–8
- Del Portillo, P., L.A. Murillo and M.E. Patarroyo, 1991. Amplification of a species-specific DNA fragment of *Mycobacterium tuberculosis* its possible use in diagnosis. *J. Clin. Microbiol.*, 29: 2163–6
- Devallois, A., K.S. Goh and N. Rastogi, 1997. Rapid identification of mycobacteria to species level by PCR–restriction fragment length polymorphism analysis of the hsp65 gene and proposition of an algorithm to differentiate 34 mycobacterial species. *J. Clin. Microbiol.*, 35: 2969–73
- Dye, C., S. Scheele, P. Dolin, V. Pathania and M.C. Raviglione, 1999. Consensus statement. Global burden of tuberculosis: estimated incidence, prevalence and mortality by country. WHO Global Surveillance and Monitoring Project. *JAMA*, 282: 677–86 (WHO/CDS/CPC/TB/99; 264)
- Eisenach, K.D., M.D. Siford, M. Donald Cave, J.H. Bates and J.T. Crawford, 1991. Detection of *Mycobacterium tuberculosis* in sputum samples using a polymerase chain reaction. *Am. Rev. Respir. Dis.*, 144: 1160–3
- Ellner, P.D., T.E. Kiehn, R. Cammarata and M. Hosmer, 1988. Rapid detection and identification of pathogenic mycobacteria by combining radiometric and nucleic acid probe methods. *J. Clin. Microbiol.*, 26: 1349–52
- Fodor, T., 1995. Detection of *Mycobacteria* in sputum smears prepared by cytocentrifugation. *Tuber. Lung Dis.*, 76: 273–4
- Gamboa, F., G. Fernandez, E. Padilla, J.M. Manterola, J. Lonca, P.J. Cardona, L. Matas and V. Ausina, 1998. Comparative evaluation of initial and new versions of the gene–probe amplified mycobacterium tuberculosis direct test for direct detection of *Mycobacterium tuberculosis* in respiratory and nonrespiratory specimens. *J. Clin. Microbiol.*, 36: 684–9
- Grosset, J. and Y. Mouton, 1995. Is PCR a useful tool for the diagnosis of tuberculosis in 1995? *Tuber. Lung Dis.*, 76: 183–4
- Hance, A.J., B. Grandchamp, V.L. Frébaud, D. Lecossier, J. Raucier, D. Bocart and B. Gicquel, 1988. Detection and identification of mycobacteria by amplification of mycobacterial DNA. *Molec. Microbiol.*, 3: 843–9
- Holmes, D.S. and M. Quigley, 1981. A rapid boiling method for the preparation of bacterial plasmids. *Anal. Biochem.*, 114: 193–7
- Iqbal, S., R. Iqbal, M. Mumtaz Khan, I. Hussain, A. Akhtar and I. Shabbir, 2003. Comparison of two conventional techniques used for the diagnosis of tuberculosis cases. *Int. J. Agri. Biol.*, 5: 545–7
- Kamerbeek, J., L. Schouls, A. Kolk, M. van Agterveld, A. van Soolingen, S. Kuijper and A. Bunschoten, 1997. Simultaneous detection and strain differentiation of *Mycobacterium tuberculosis* for diagnosis and epidemiology. *J. Clin. Microbiol.*, 35: 907–10
- Kirschner, P., B. Springer, U. Vogel, A. Meier, A. Wrede and M. Kiekenbeck, 1993. Detection and identification of *Mycobacteria* by nucleic acid sequence determination: report of a 2-year experience in a clinical laboratory. *J. Clin. Microbiol.*, 31: 2882–9
- Mondragon, M., C.A. Vazquez, C. Barron and P. Acosta, 2000. Comparison among three methods for mycobacteria identification. *Salud publica de Mexico*, 42: 484–9
- Morgan, M.A., C.D. Horstmeier, D.R. DeYoung and G.D. Roberts, 1983. Comparison of a radiometric method (BACTEC) and conventional culture media for recovery of mycobacteria from smear–negative specimens. *J. Clin. Microbiol.*, 18: 384–8
- Noordhoek, G.T., H.J. Kolk, G. Bjunene, D. Catty, J.W. Dale and P.E. Fine, 1994. Sensitivity and specificity of PCR for detection of *Mycobacterium tuberculosis*: a blind comparison study among seven laboratories. *J. Clin. Microbiol.*, 32: 277–84
- Pierre, C., D. Lecossier, Y. Boussougnant and A. Hance, 1991. Use of a re–amplification protocol improves sensitivity of detection of *Mycobacterium tuberculosis* in clinical samples by amplification of DNA. *J. Clin. Microbiol.*, 29: 712–7
- Piersimoni, C., A. Callegaro, D. Nista, S. Bornigia, F. Conti, G. Santini and G. Sio, 1997. Comparative evaluation of two commercial amplification assays for direct detection of *Mycobacterium tuberculosis* complex in respiratory specimens. *J. Clin. Microbiol.*, 35: 193–6
- Scarparo, C., P. Piccoli, A. Rigon, G. Ruggiero, M. Scagnelli and C. Piersimoni, 2000. Comparison of enhance *Mycobacterium tuberculosis* amplified direct test with COBAS AMPLICOR *Mycobacterium tuberculosis* assay for direct detection of *Mycobacterium tuberculosis* complex in respiratory and extra pulmonary specimens. *J. Clin. Microbiol.*, 38: 1559–62
- Sjoberg, U., M. Mecklenburg, A.B. Andersen and H. Miomer, 1990. Polymerase chain reaction for detection of *Mycobacterium tuberculosis*. *J. Clin. Microbiol.*, 28: 2200–4
- Smithwick, R.W., 1976. *Laboratory Manual for Acid-fast Microscop.* p. 40. US Department of Health, Education, and Welfare, Center for Disease Control, Atlanta, USA
- Soini, H., M. Skurnik, K. Lippo and M.K. Vilgner, 1992. Detection and identification of mycobacteria by amplification of segment of the gene coding for the 32–kilodalton protein. *J. Clin. Microbiol.*, 30: 2025–8
- Springer, B., L. Stockman, K. Teschner, G.D. Roberts and E.C. Böttger, 1996. Two laboratory collaborative study on identification of mycobacteria: Molecular versus phenotypic methods. *J. Clin. Microbiol.*, 34: 296–303
- Wang, S.X., and L. Tay, 1999. Evaluation of three nucleic acid amplification methods for direct detection of *Mycobacterium tuberculosis* complex in respiratory specimens. *J. Clin. Microbiol.*, 37: 1932–4

(Received 24 November 2004; Accepted 22 January 2005)